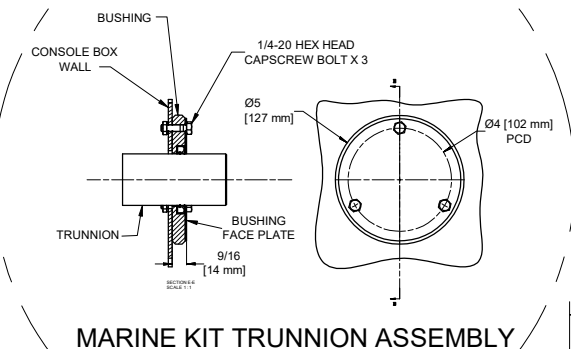
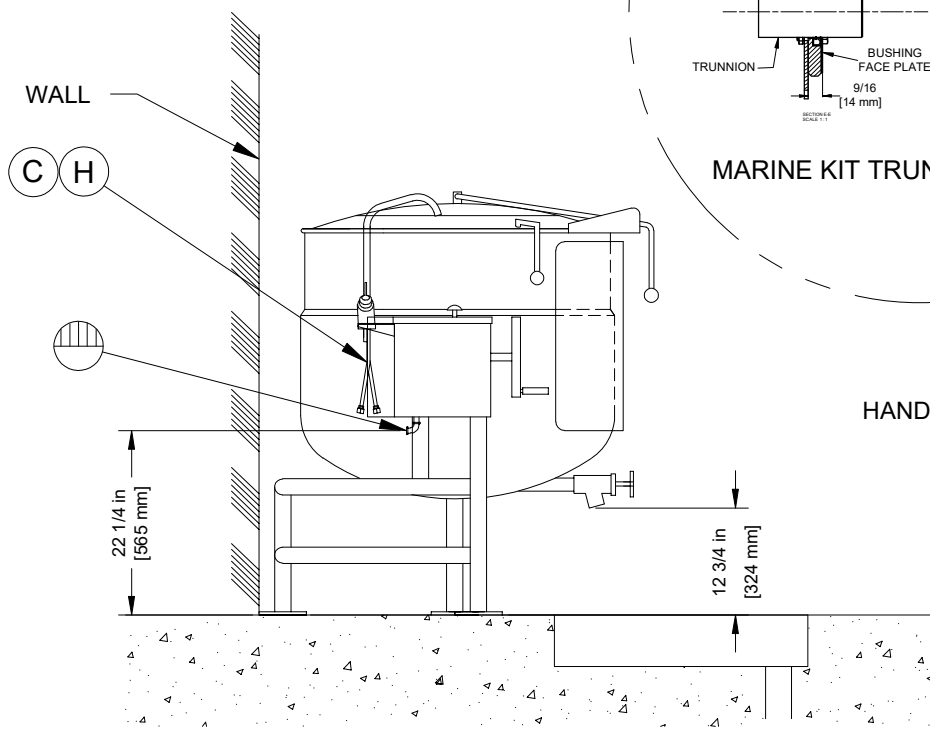


FOOT LOCATION AND RECOMMENDED FLOOR DRAIN DETAIL

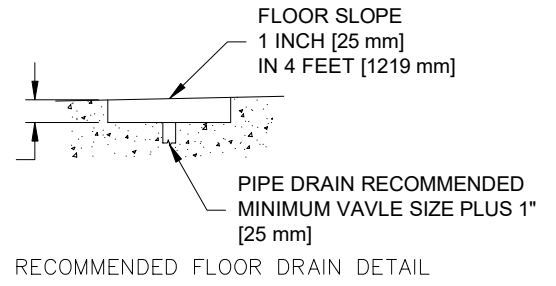


MARINE KIT TRUNNION ASSEMBLY



HAND WHEEL

4 INCH [102 mm] MINIMUM  
6 INCH [152 mm] RECOMMENDED



RECOMMENDED FLOOR DRAIN DETAIL

DRAWING IS NOT TO SCALE

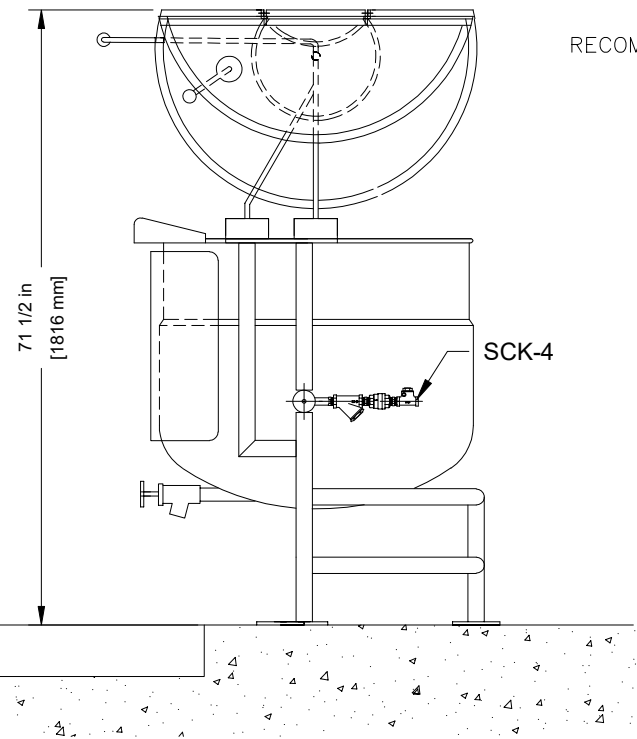
UTILITIES:

- STEAM IN - 3/4 NPT
- H HOT WATER FAUCET } 1/2 COPPER TUBE
- C COLD WATER FAUCET
- CONDENSATE RETURN - 1/2 NPT

KDL-100-T OPTIONS	NOTES:
316 STAINLESS STEEL LINER	
SPECIAL 2-PIECES SPRING ASSIST COVER	
(TD-2) 2" TANGENT DRAW-OFF VALVE	
(DS-2) DRAIN STRAINER	3/16" DIA. HOLES (STANDARD)
(SCK4) S.S. STEAM CONTROL KIT	
(DPK) DOUBLE PANTRY FAUCET	ⓐ COLD WATER: ⓑ HOT WATER:
(FBKT) FAUCET BRACKET	PIPING: 1/2" NPT (DOUBLE)
(HS) HEAT SHIELD	
(Q10051) MARINE KIT TRUNNION ASSY	
(Q10051A) ANTI-CORROSION TRUNNION ASSY	
CHROME PLATED SAFETY VALVE	
50 PSI	
HEX BOLT STYLE EXPOSED SCREWS WITH SILICONE SEAL COVER	
NSF APPROVAL ASME PRESSURE CERTIFICATION	

NOTES:

- 1.) ALL VERTICAL DIMENSIONS SHOWN ARE MINIMUM. FEET ARE ADJUSTABLE TO 1 INCH [25 mm] MAXIMUM.
- 2.) CLEVELAND RANGE RESERVES RIGHT OF DESIGN IMPROVEMENT OR MODIFICATION AS WARRANTED.
- 3.) TO PREVENT INJURY KETTLE MUST BE BOLTED TO FLOOR.



CUSTOMER APPROVAL

NAME: .....

SIGNATURE: .....

DATE : .....

THIS DESIGN COVERS A PROPRIETARY ITEM AND IS THE PROPERTY OF CLEVELAND RANGE LTD.  
THIS DRAWING IS NOT TO BE COPIED OR USED WITHOUT THE APPROVAL OF CLEVELAND RANGE LTD.

FOR GENERAL TOLERANCES REFER TO PWH-043

**CLEVELAND RANGE LTD.**  
8251 KEELE STREET, CONCORD, ONTARIO, CANADA

TITLE  
**KDL100T w/ MARINE OPTIONS  
SALES DRAWING**

MATERIAL  
TYPE & GRADE  
FORM  
SIZE  
FINISH

DO NOT SCALE  
PRINTED DRAWING

DRAWN BY **NBANAIT** DATE **01/18/2022**

SIZE  
**B**

DRAWING NO.  
**KDL100TMVR**

SHEET 1 OF 1

REV  
**A**